

CBT 100 UNITIZED BATCH TREATING SYSTEM



RECOMMENDED FOR TREATING BARLEY, CANOLA, CORN, COTTON, SOYBEAN, SUGAR BEET, SUNFLOWER, VEGETABLE AND WHEAT SEED



The Unitized Continuous Batch Treating System is PLC driven and operates on the weight (volume) of the seed and liquid chemical combined. If actual applied or measured level is higher or lower than the target level, the PLC will auto-adjust, for improved accuracy.

Features & Benefits

- The multi-programmable PLC coordinates different seed types, fungicides, insecticides,
- Order of application, and length of treating time
- The industrial PC interface provides a digital display of totals grams, target grams, actual grams and percent accuracy for chemical
- The auto messaging system relays information or questions about operation, last batch, alarms, low seed or chemical levels
- Liquid treatment is measured by time and speed, atomized to ensure uniform seed coverage
- Electronic Control Panel with input elevator control



CAPACITY

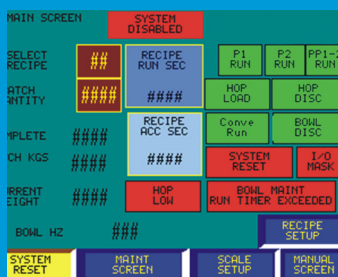
- 100 kg (220 pound) Mixing Bowl
- Canola: 24,000 lb/hr* (10.89 M.T./hr)
- Barley, Wheat, Cotton, Corn and Soybeans: 440 bu/hr* (12.0 M.T./hr)
- Sunflowers, Sugar Beets, and Vegetables: 24,000 lb/hr* (10.89 M.T./hr)

*Capacity based on a 60 pound bushel weight and a 30 second cycle using corn

10.89 M.T./hr

TREATER DIMENSIONS:

HEIGHT 3546 MM (139.60") WIDTH 1346 MM (53.00") LENGTH 2058 MM (81.03")



1) HMI Touch Screen

- Multi-programmable PLC
- Sequential time-ordered event recipes
- PLC controlled pump, weigh basket, mixing bowl
- Multi-lingual enabled*

* English, Spanish and Portuguese (Brazil).
Other languages available upon request.



2) Integrated Aspiration System

Dust evacuation ports remove dust and chaff for improved treatment-to-seed coverage

- Self contained dust evac assembly
- Removable dust collection bag



3) LP 300 Chemical Supply Tank

- Designed to mix treatment products requiring dilution or agitation and pumping it to the CBT atomizer
- 300 liter (80 gal) Tank: stainless steel construction
- Tank Agitation Motor
- Closed calibration: 2,957 ml (100 oz)
- Dosing pump: 1p hr pump kit, ac-vfd
- Drain Plug /Valve Assembly

LP 300 Chemical Supply Tank shown with optional deck scale.



4) Hopper & Weigh Basket

- Weigh basket auto calibration
- Inlet hopper with hi & lo level sensor

VALUE ADDED OPTIONS

- Remote START/STOP (45 ft)
- Internal print capabilities of total batches, batch size, and total kilograms treated for each treating period
- Internal print modem – download statistics into database
- Internal color industrial touch operation or integration capability to existing network
- Specialty coating capabilities



Bayer

Crop Science Division
1451 Dean Lakes Trail
Shakopee, Minnesota 55379 - USA
www.seedgrowth.bayer.com
Phone: +1 952 445 6868
Toll Free: 1 855 363 3152
E-mail: equipment@bayer.com

Before using any crop protection product you should read and carefully follow directions, cautionary statements, and other information appearing on the product label. Our technical information is based on extensive testing and is, to the best of our current knowledge, true and accurate but given without warranty as the conditions of use and storage are beyond our control. Descriptions and property data of the product do not contain any statement as to liability for possible damage.

GBT100UNITIZED20211015