

CBT 100 LOSS IN WEIGHT BATCH TREATING SYSTEM



RECOMMENDED FOR TREATING BARLEY, CANOLA, CORN, COTTON, SOYBEAN, SUGAR BEET, SUNFLOWER, VEGETABLE AND WHEAT SEED



The Continuous Batch Treating System is PLC driven and operates on the weight of the seed and liquid chemical combined. If actual applied or measured level is higher or lower than the target level, the PLC will auto-adjust for improved accuracy.

Features & Benefits

- The multi-programmable PLC coordinates different seed types, fungicides, insecticides, order of application, and length of treating time
- The industrial PC interface provides a digital display of totals grams, target grams, actual grams and percent accuracy for chemical
- The auto messaging system relays information or questions about operation, last batch, alarms, low seed or chemical levels
- Liquid treatment is measured by a loss in weight pumping system, then atomized to ensure uniform seed coverage



24,000 lb/hr

CAPACITY

- Canola: 24,000 lb/hr*
- Barley, Wheat, Cotton, Corn and Soybeans: 440 bu/hr (12.0 M.T./hr)
- Sunflowers, Sugar Beets, and Vegetables: 24,000 lb/hr

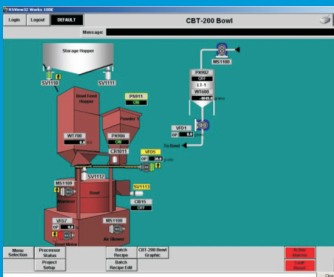
*Capacity based on a 60 pound bushel weight and a 30 second cycle using corn

MAXIMUM BOWL SIZE

- 4.9 cuft



TREATER DIMENSIONS: HEIGHT 97.49" WIDTH 51.00" LENGTH 53.00"



1) Automatic Slurry - Control Screen

- Automatic calibration of each product
- 20 liter pump stations (up to 4)
- Automatic clean out - retrieves product from supply tanks (up to 4)
- Accumulation display of seed and chemical weight for each cycle
- PLC operates up to 4 Loss in Weight Pump & Weighing Stations



2) Removable Bowl Cover

- Lifts up and swings out (R-L) for inspection, cleaning and servicing the Mixing Bowl



3) Integrated Aspiration System

Dust evacuation ports remove dust and chaff for improved treatment-to-seed coverage.

- On top of the Bowl Cover
- On the side of the Discharge
- On the bottom of the Weigh Basket frame
- On the lid of the Optional Powder Feeder hopper



4) Chemical Inlet

- Supports up to 4 Pump & Weighing Stations
- Removable for cleaning and maintenance

VALUE ADDED OPTIONS

- Remote control panel (with 45ft. power cord)
- 60 gallon CBP tanks
- Weigh Basket Auto Calibration Kit
- Up to 2 dry powder applicators
- Internal print capabilities of total batches, batch size, and total kilograms treated for each treating period.
- Internal printer modem connection
- Integration capability to existing network
- Specialty coating capabilities



Bayer

Crop Science Division
1451 Dean Lakes Trail
Shakopee, Minnesota 55379 - USA
www.seedgrowth.bayer.com
Phone: +1 952 445 6868
Toll Free: 1 855 363 3152
E-mail: equipment@bayer.com

Before using any crop protection product you should read and carefully follow directions, cautionary statements, and other information appearing on the product label.

Our technical information is based on extensive testing and is, to the best of our current knowledge, true and accurate but given without warranty as the conditions of use and storage are beyond our control. Descriptions and property data of the product do not contain any statement as to liability for possible damage.

GBT100LW20211015

