

# CALIBRATION KIT 100 OZ BEAKER



**DESIGNED BY BAYER FOR EXCLUSIVE  
USE WITH CBP AND PSD TANKS**

## 100oz Calibration Kit-79689837

**Top Mount Calibration Systems measure chemical by volume, not pump speed, in a required time frame for true chemical flow and accurate seed application.**

### Modular Design

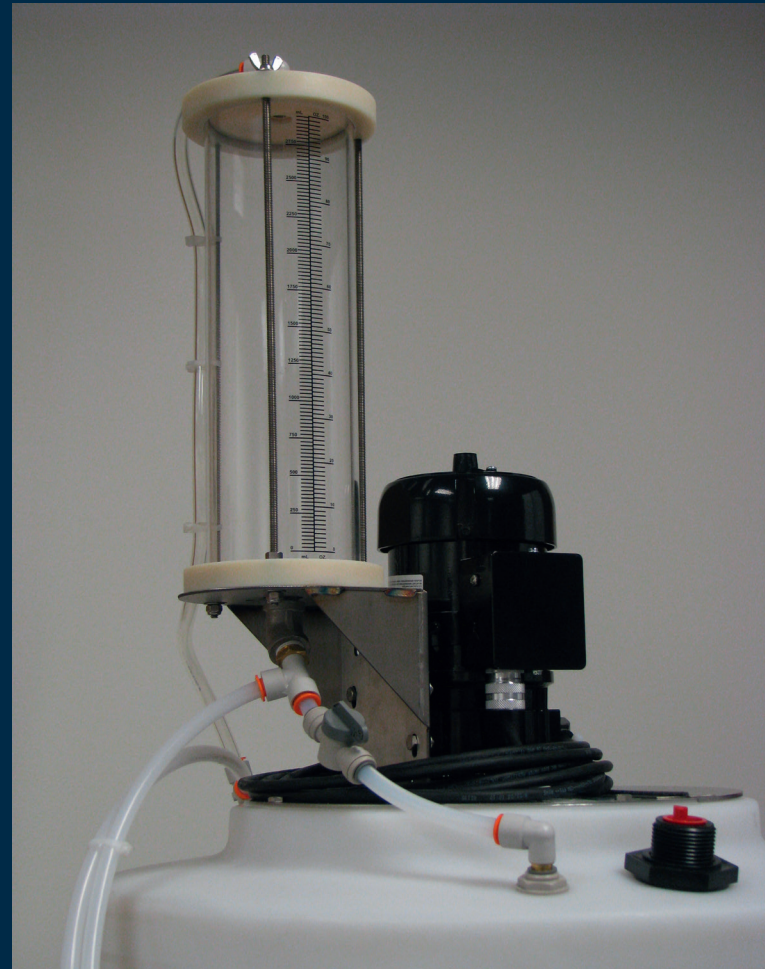
The optional top mount calibration kit can be ordered with CBP and PSD tanks from the factory or as an upgrade kit for existing field installations.

### Upgrade Package

Bolts to either the CBP agitation motor or the PSD gear reducer. Upgrade kit includes graduated cylinder assembly, stainless steel mount bracket, drain valve, union tee, tubing and hardware.

### Features & Benefits

- Actual pump output calibration for truer accuracy
- True closed system with no worker exposure, recirculates product back into tank
- Easy field installation
- Durable construction
- Easy cleanup requires no equipment breakdown



### ASSEMBLY SIZE

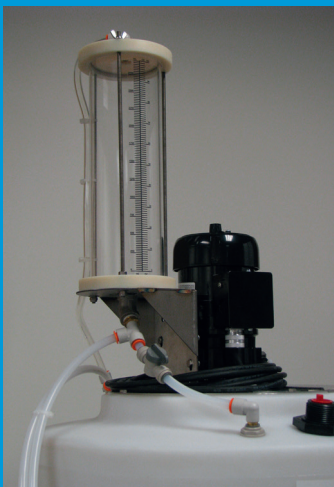
- 100oz Assembly 22.28"

### ADDED FEATURE

- Eye level mounting for easy viewing and operation



## PRODUCT DETAILS: OPTIONS



### 1) CBP Tank with Closed Calibration

- Provides accurate real time calibration by volume
- Chemical recirculation function
- Quick disconnect NPT fittings for easy cleaning
- Closed calibration limits worker exposure, improved safe handling procedures



### 2) PSD Tank with Closed Calibration

- Provides accurate real time calibration by volume
- Chemical recirculation function
- Quick disconnect NPT fittings for easy cleaning
- Closed calibration limits worker exposure, improved safe handling procedures

### DUAL FUNCTION VALVE

The drain valve switches from calibration to treat mode and drains treatment product back into the tank without delaying, stopping or interrupting the seed treatment process.



#### Bayer

Crop Science Division  
1451 Dean Lakes Trail  
Shakopee, Minnesota 55379 - USA  
[www.seedgrowth.bayer.com](http://www.seedgrowth.bayer.com)  
Phone: +1 952 445 6868  
Toll Free: 1 855 363 3152  
E-mail: [equipment@bayer.com](mailto:equipment@bayer.com)

Before using any crop protection product you should read and carefully follow directions, cautionary statements, and other information appearing on the product label.

Our technical information is based on extensive testing and is, to the best of our current knowledge, true and accurate but given without warranty as the conditions of use and storage are beyond our control. Descriptions and property data of the product do not contain any statement as to liability for possible damage.

CALIBRATIONKIT20211014